

WATER POLLUTION CONTROL AUTHORITY LEDYARD, CONNECTICUT RELOCATION OF BOOSTER PUMPING STATION TO SERVE ALJEN HEIGHTS WATER EXTENSION PHASE 1B

CONTRACT No.
2010-**

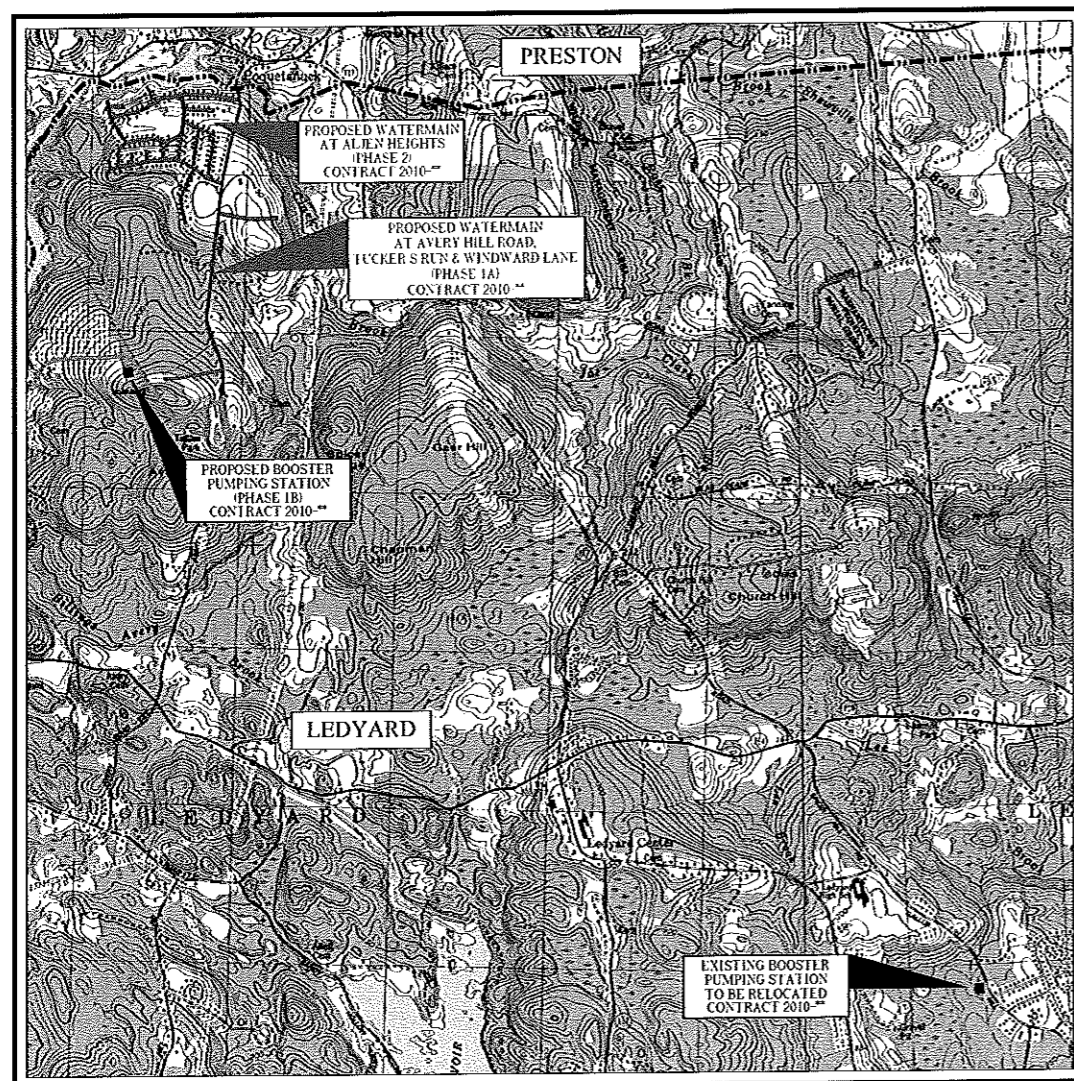
INDEX OF DRAWINGS

SHEET NO. TITLE

- | | |
|----|---|
| 1. | <u>CIVIL</u>
SITE PLANS AND DETAIL |
| 2. | <u>STRUCTURAL</u>
PLANS, SECTIONS & DETAILS |
| 3. | <u>MECHANICAL</u>
PLANS, SECTIONS & PHOTOS |
| 4. | <u>ARCHITECTURAL</u>
PLAN, ELEVATIONS AND PHOTOS |
| 5. | <u>ELECTRICAL</u>
PLANS, DETAILS AND PHOTOS |

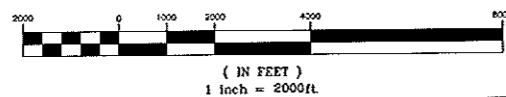
NOTES:

- REFER TO THE APPENDIX OF THE PROJECT MANUAL FOR GENERAL NOTES & LEGEND.
- INFORMATION ON EXISTING CONDITIONS SHOWN ON THE DRAWINGS IS BASED ON SUMMER 2009 SURVEY BY AMORY ENGINEERS, SUPPLEMENTED BY TOWN OF LEDYARD G.I.S. MAPPING AND IS APPROXIMATE ONLY.



LOCUS PLAN

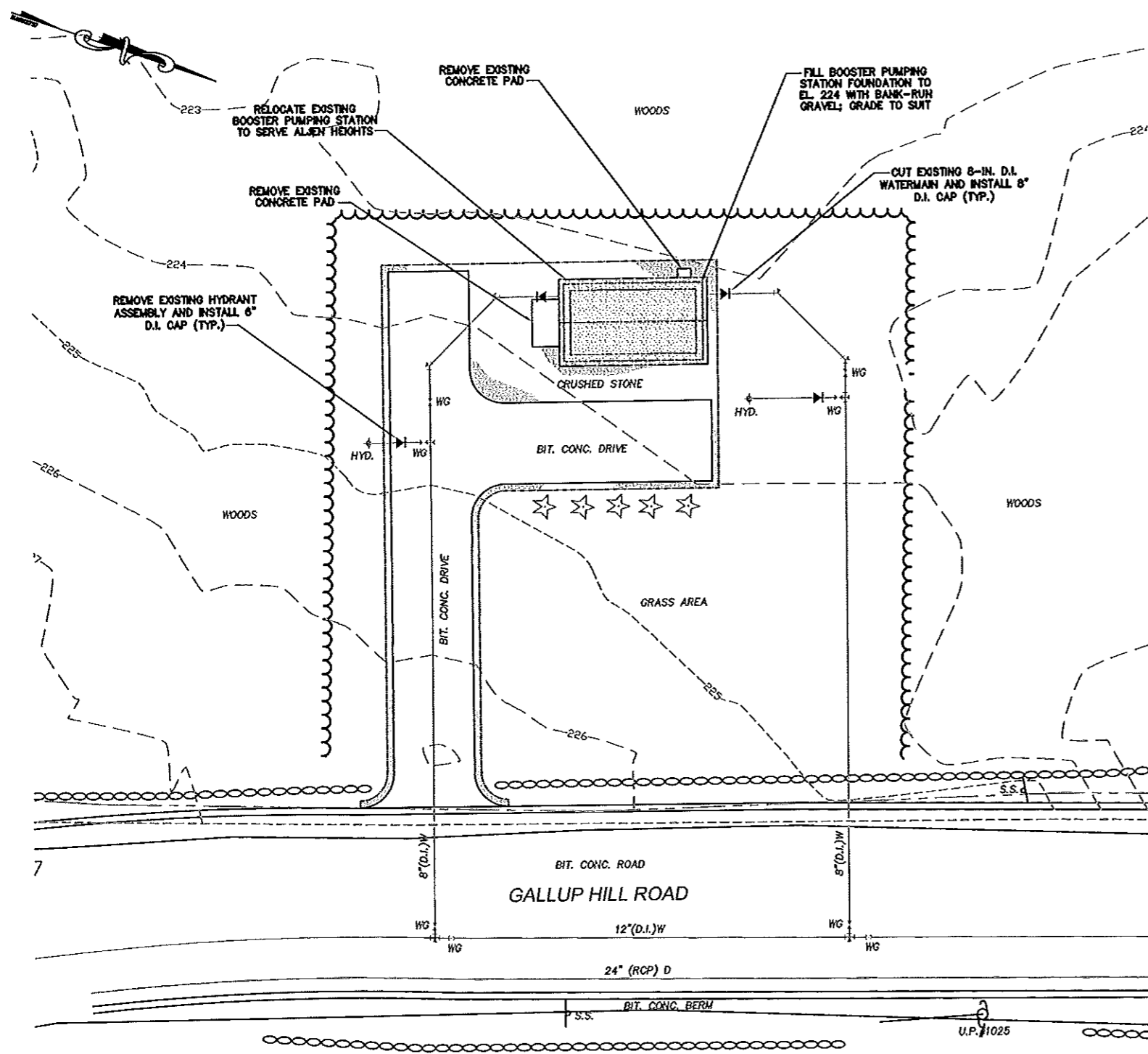
GRAPHIC SCALE



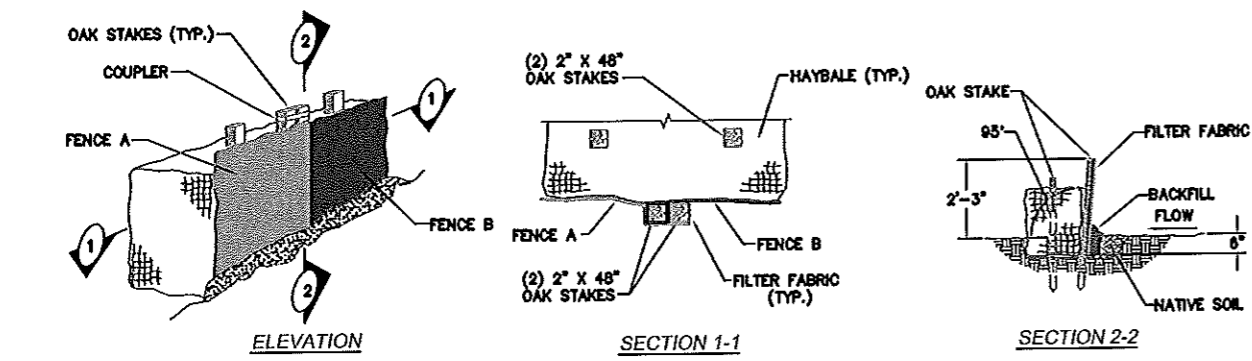
AUGUST 2009

AMORY ENGINEERS, P.C.
DUXBURY, MASSACHUSETTS

LATEST REVISION:



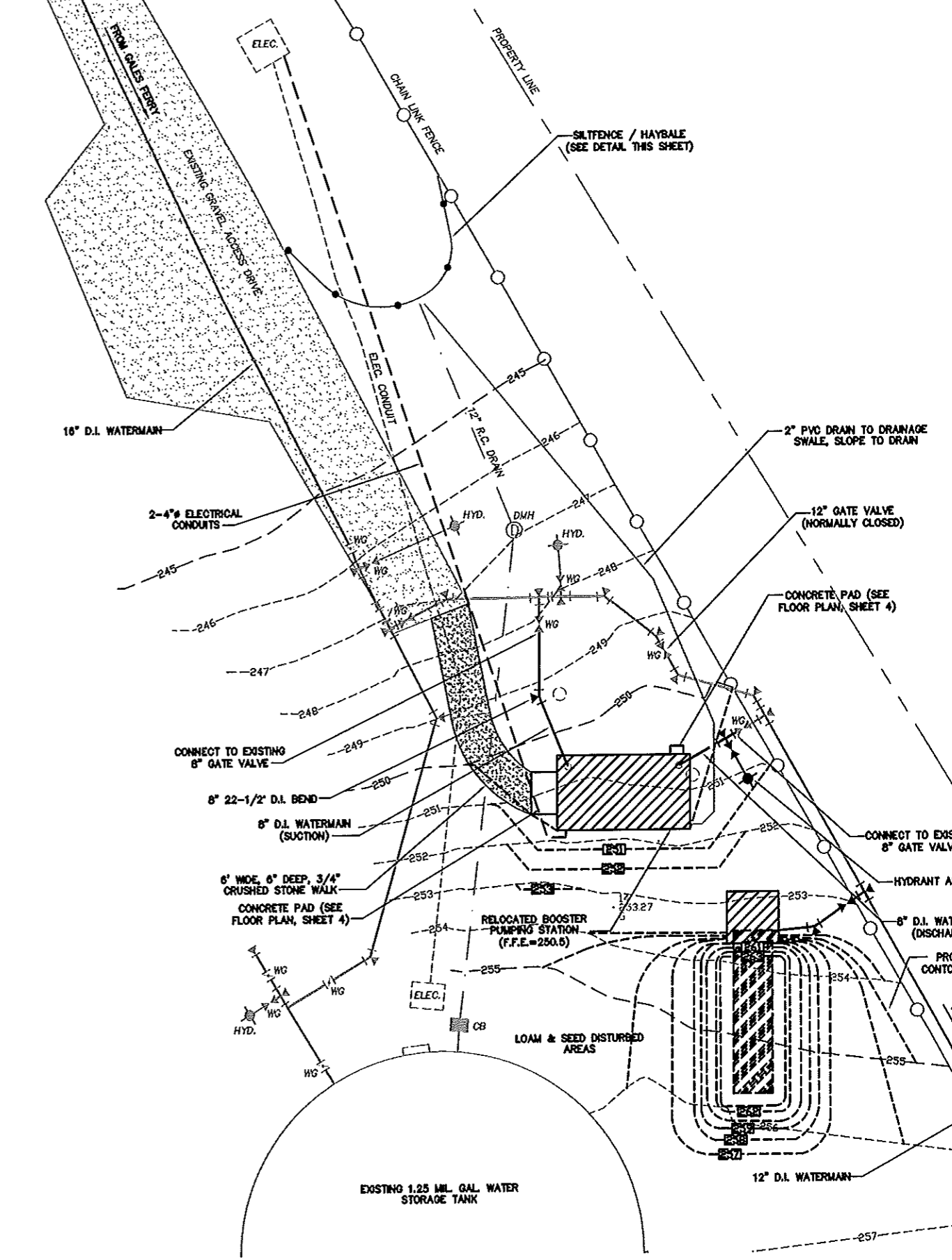
EXISTING SITE PLAN
SCALE: 1" = 10'-0"



1. SILT FENCE / HAYBALES TO BE PLACED PRIOR TO START OF WORK.
2. OAK STAKES TO BE DRIVEN AT LEAST 18" MIN. INTO NATIVE SOIL.

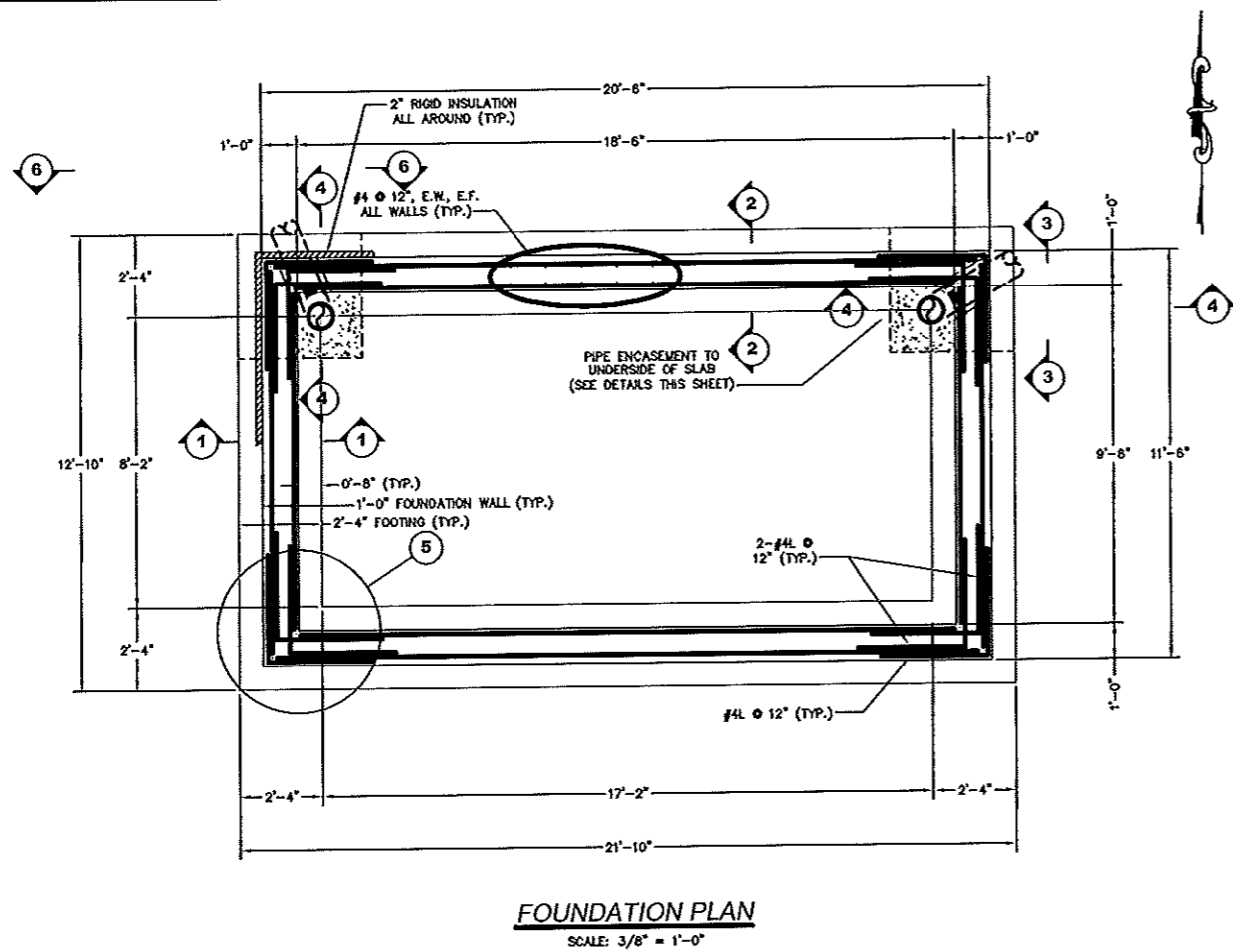
SILT FENCE / HAYBALE DETAIL
NOT TO SCALE

HOLMBERG ORCHARD

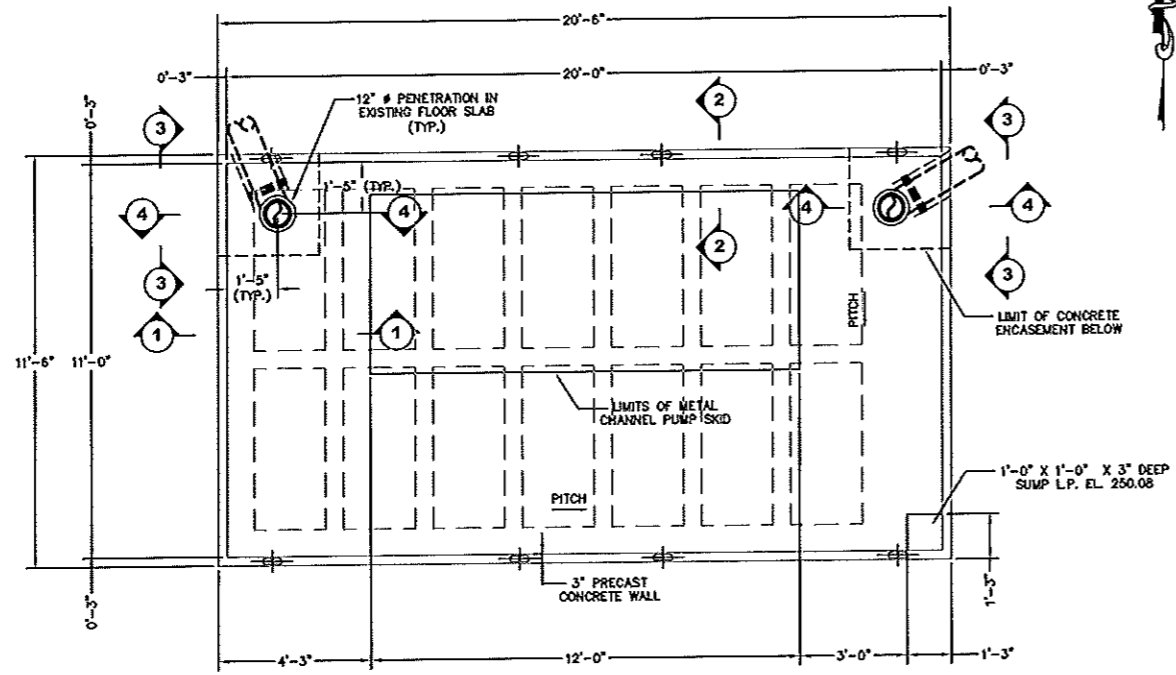


PROPOSED SITE PLAN
SCALE: 1" = 10'-0"

REVISIONS NO. ITEM DATE		AMORY ENGINEERS, P.C. DUXBURY, MASSACHUSETTS		WATER POLLUTION CONTROL AUTHORITY LEDYARD, CONNECTICUT	
PRELIMINARY FOR REVIEW PURPOSES ONLY NOT TO BE USED FOR CONSTRUCTION		DRAWN BY: PGB/RJT DESIGNED BY: PGB/RJT CHECKED BY: RSJ	FILE NAME: AS SHOWN JOB NO.: 3331 DATE: 8/15/09	SCALE: AS SHOWN DWG. NO.: 1531 CONTRACT: 2010-**	RELOCATION OF BOOSTER PUMPING STATION TO SERVE ALJEN HEIGHTS WATER EXTENSION SITE PLANS AND DETAIL
DATE: _____					

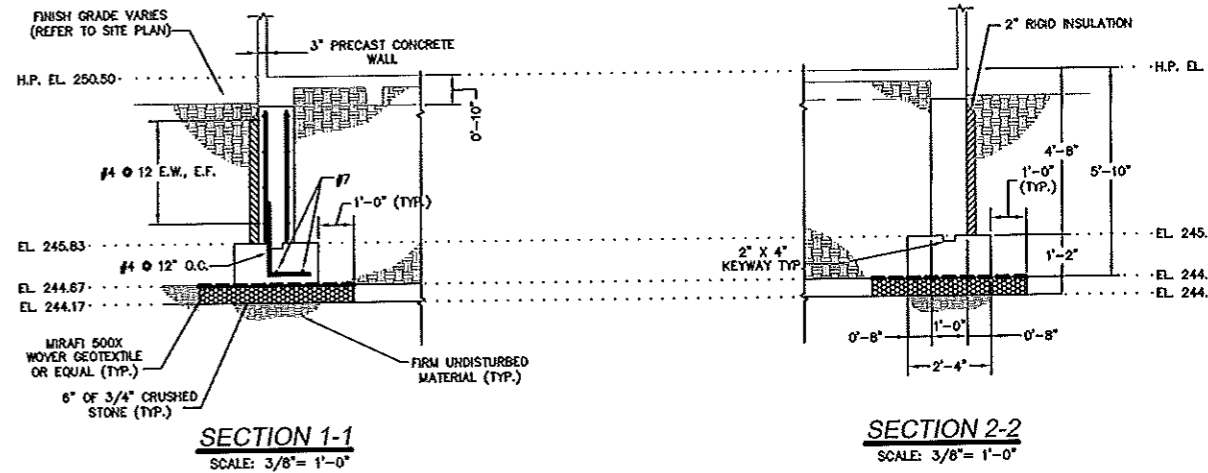


FOUNDATION PLAN
SCALE: 3/8" = 1'-0"



FLOOR PLAN
SCALE: 3/8" = 1'-0"

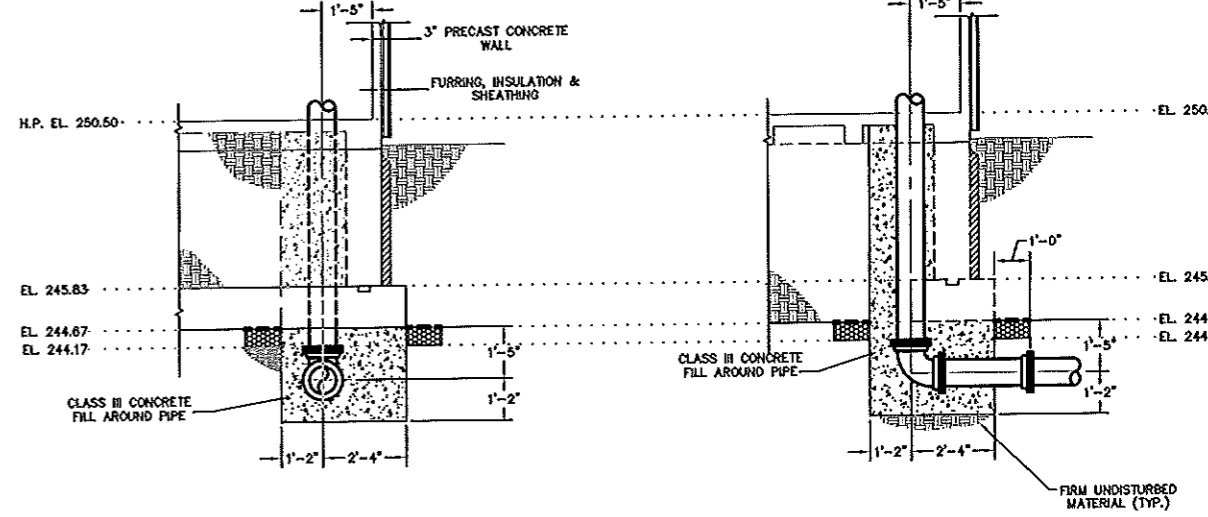
NOTE:
1. 10" REINFORCED CONCRETE SLAB UNDERSIDE LEVEL AT EL. 249.67
2. TOP OF SLAB HIGH POINT (H.P.) AT EL. 250.50
3. CONCRETE FLOOR SLAB IS 10-IN. THICK AT NW CORNER, 9-IN. THICK AT NE AND SW CORNERS AND 8-IN. THICK AT SE CORNER, ADJACENT TO SUMP.



SECTION 1-1
SCALE: 3/8" = 1'-0"

SECTION 2-2
SCALE: 3/8" = 1'-0"

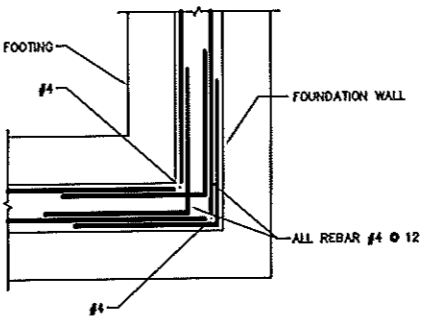
NOTE: WALL REINFORCING TYPICAL EXCEPT AS NOTED.



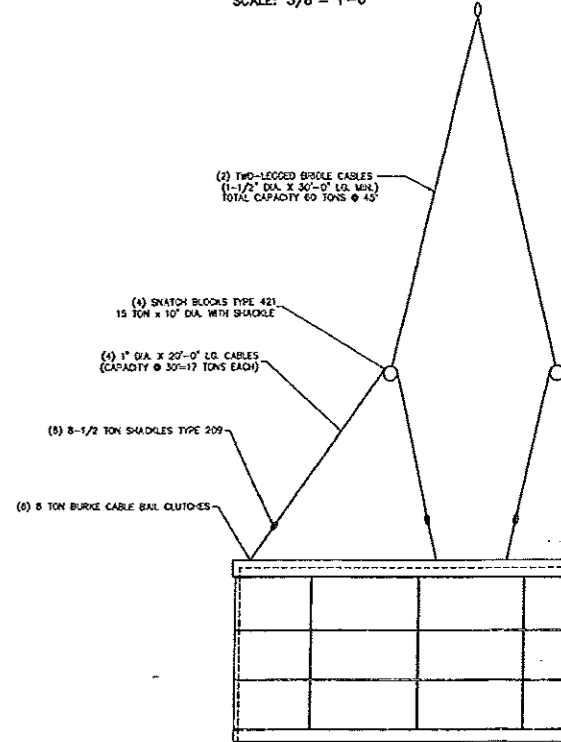
SECTION 3-3 / 6-6
SCALE: 3/8" = 1'-0"

SECTION 4-4
SCALE: 3/8" = 1'-0"

NOTES:
1. REFER TO MECHANICAL SHEET 3 OF 6 FOR PIPING INFORMATION.
2. FOUNDATION FOOTING AND WALL TO BE CONSTRUCTED PRIOR TO PLACEMENT OF PIPING/CONCRETE FILL.
3. PIPING SHOW ROTATED IN SECTIONS 3-3, 4-4 & 6-6 FOR CLARITY.

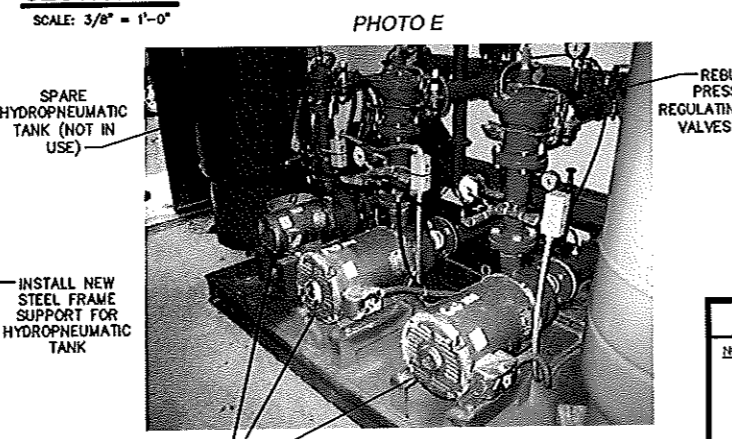
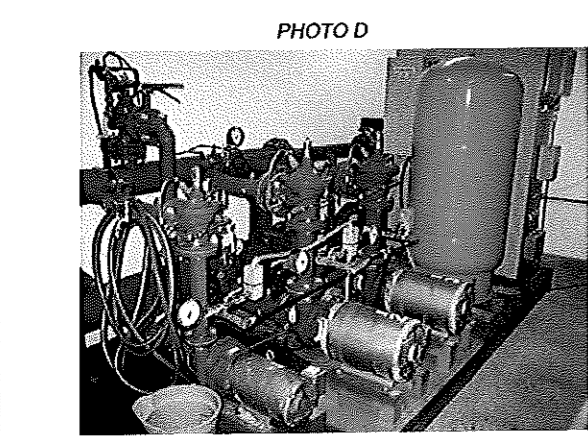
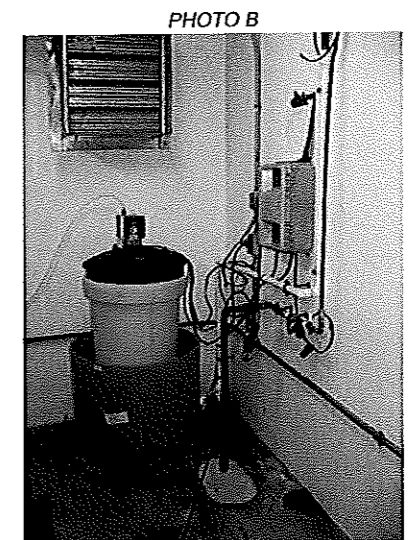
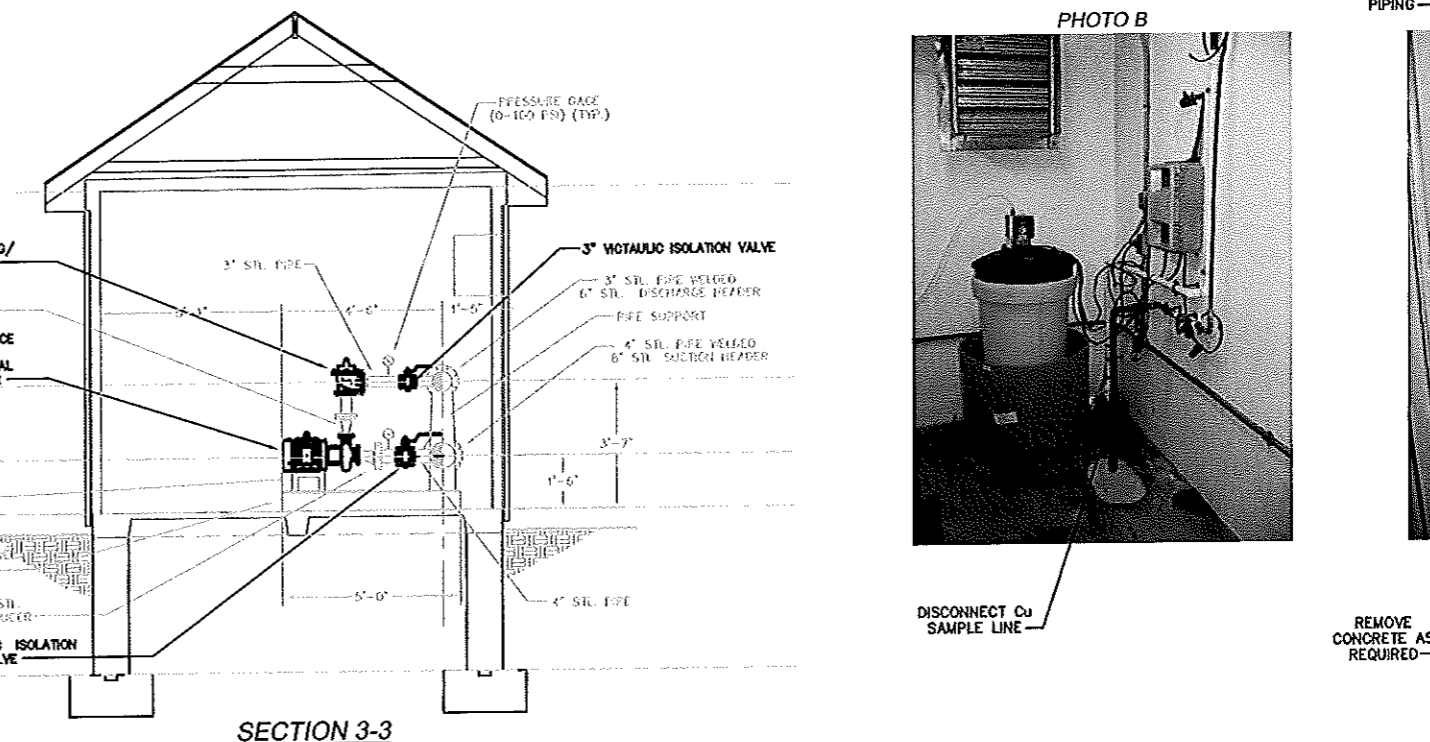
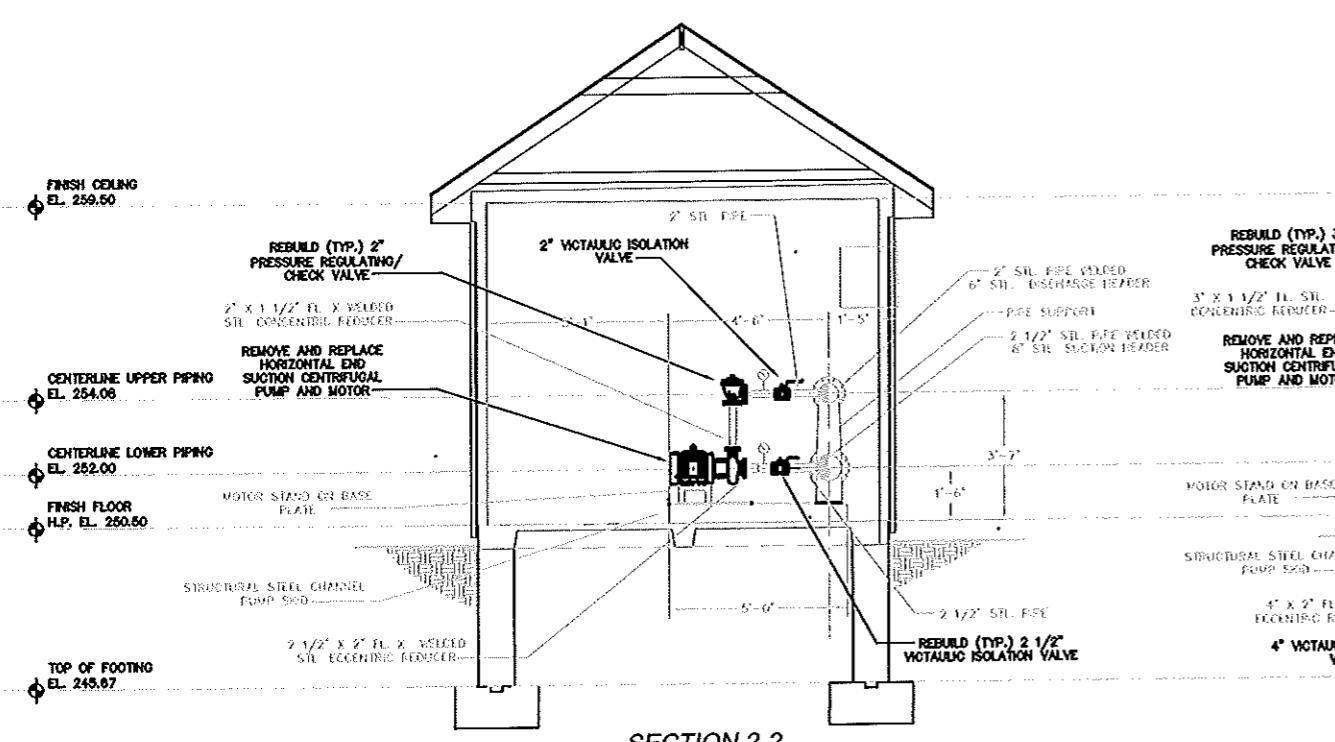
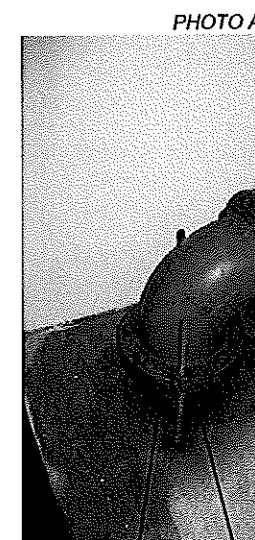
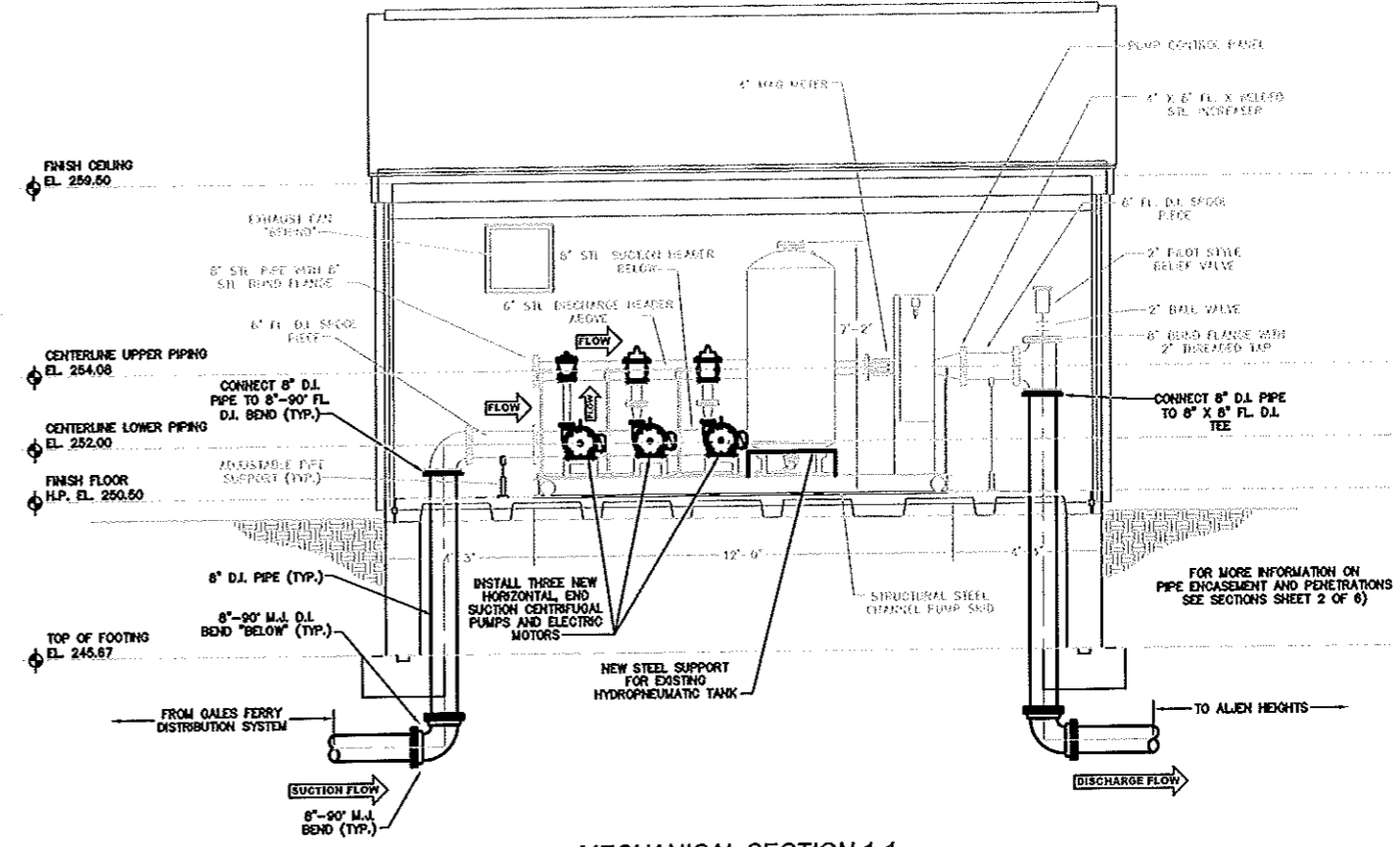
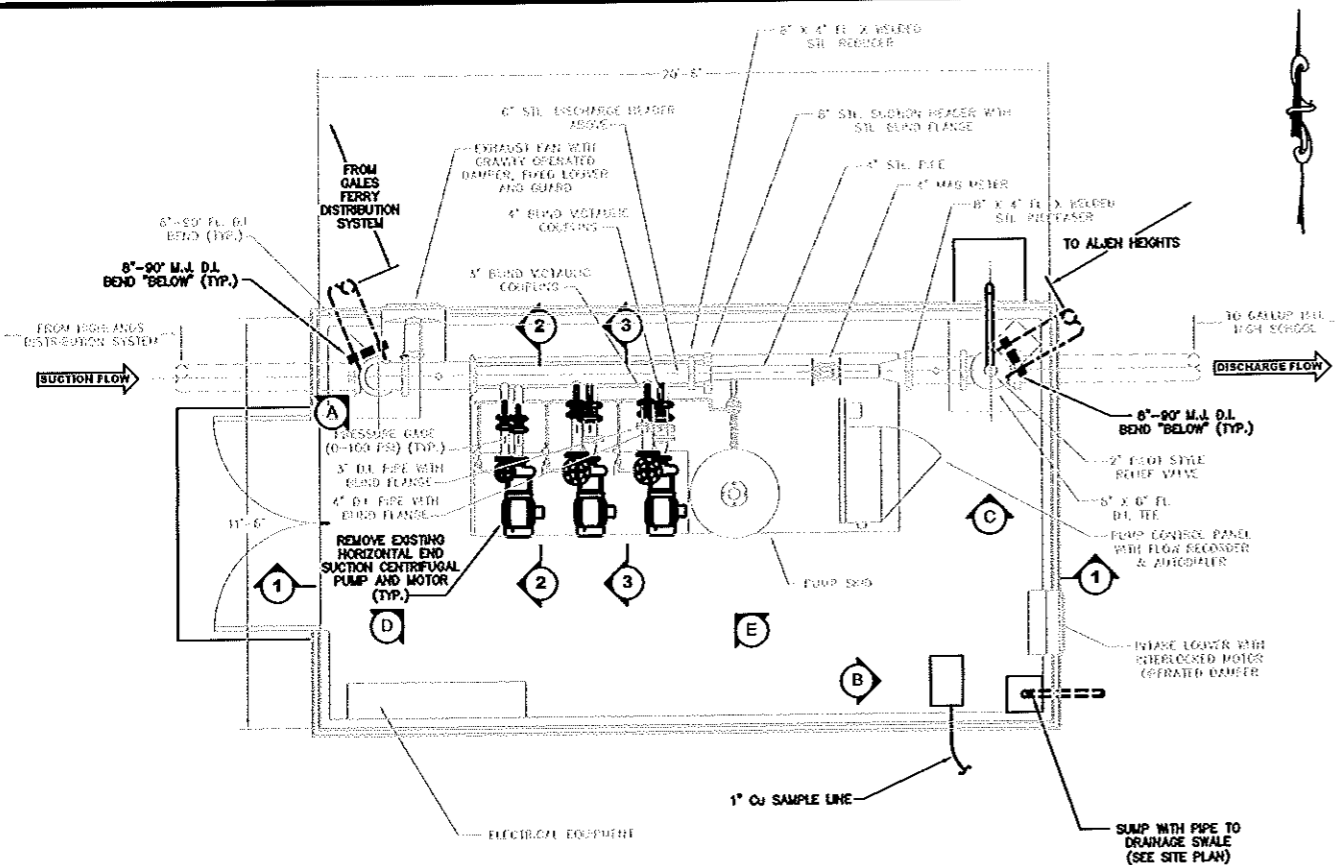


CORNER DETAIL
SCALE: 1/2" = 1'-0"



LIFTING DETAIL (FROM ROTONDO)
NOT TO SCALE

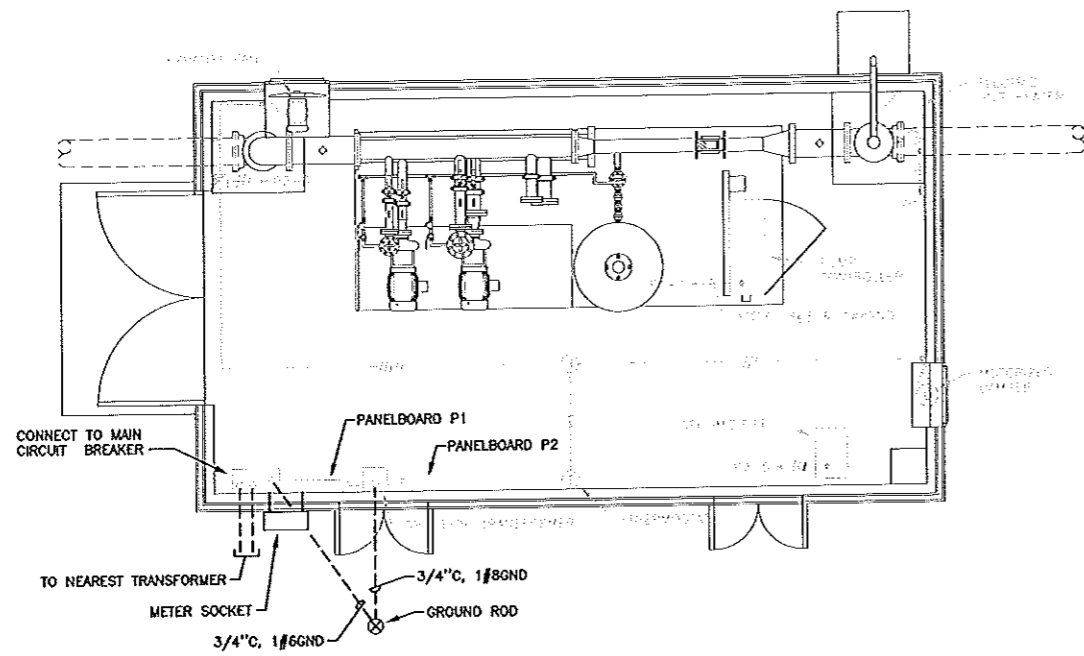
REVISIONS		AMORY ENGINEERS, P.C.		AMORY ENGINEERS, P.C.		WATER POLLUTION CONTROL AUTHORITY	
NO.	ITEM	DATE		DUXBURY, MASSACHUSETTS		LEDYARD, CONNECTICUT	
				DRAWN BY: POB/RJT	FILE NAME: AS SHOWN	SCALE: AS SHOWN	RELOCATION OF BOOSTER PUMPING STATION TO SERVE ALJEN HEIGHTS WATER EXTENSION
				DESIGNED BY: POB/RJT	JOB NO.: 3331	DWG. NO.: 1532	
				CHECKED BY: RSJ	DATE: 8/15/09	CONTRACT: 2010-11	
				DATE: _____		PLANS, SECTIONS AND DETAILS	



AMORY ENGINEERS, P.C. 222 Ledyard WPA Allen Plan 10 - 10/11
 200 West Main Street, Wallingford, CT 06495

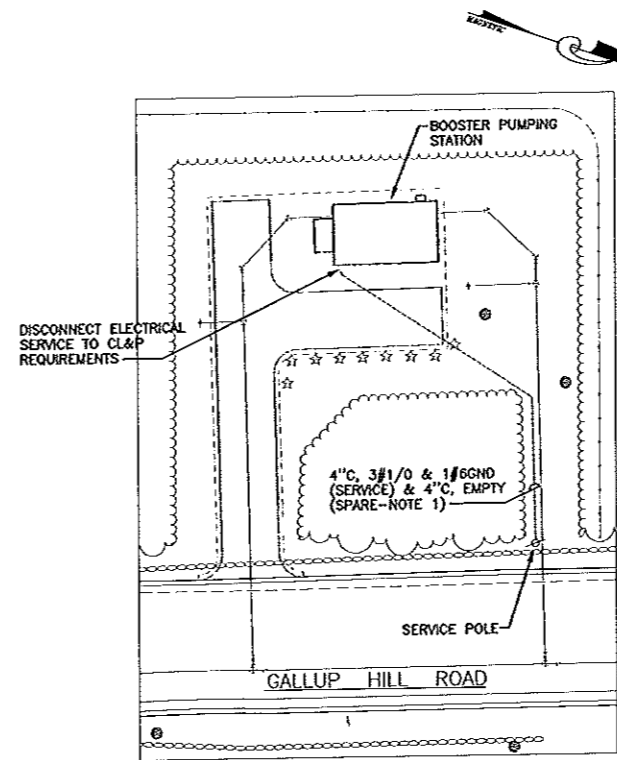
REPLACE PUMP & MOTOR No. 1, 2 & 3
 REBUILD PRESSURE REGULATING/CHECK VALVES (TYP.)

REVISIONS NO. ITEM DATE		AMORY ENGINEERS, P.C. AMORY ENGINEERS, P.C. DUXBURY, MASSACHUSETTS		WATER POLLUTION CONTROL AUTHORITY LEDYARD, CONNECTICUT	
DRAWN BY: PGB/RJT DESIGNED BY: PGB/RJT CHECKED BY: RSJ	FILE NAME: AS SHOWN JOB NO.: 3331 DATE: 8/15/09	SCALE: AS SHOWN DWG. NO.: 1533 CONTRACT: 2010-11	RELOCATION OF BOOSTER PUMPING STATION TO SERVE ALLEN HEIGHTS WATER EXTENSION PLAN, SECTIONS AND PHOTOS		

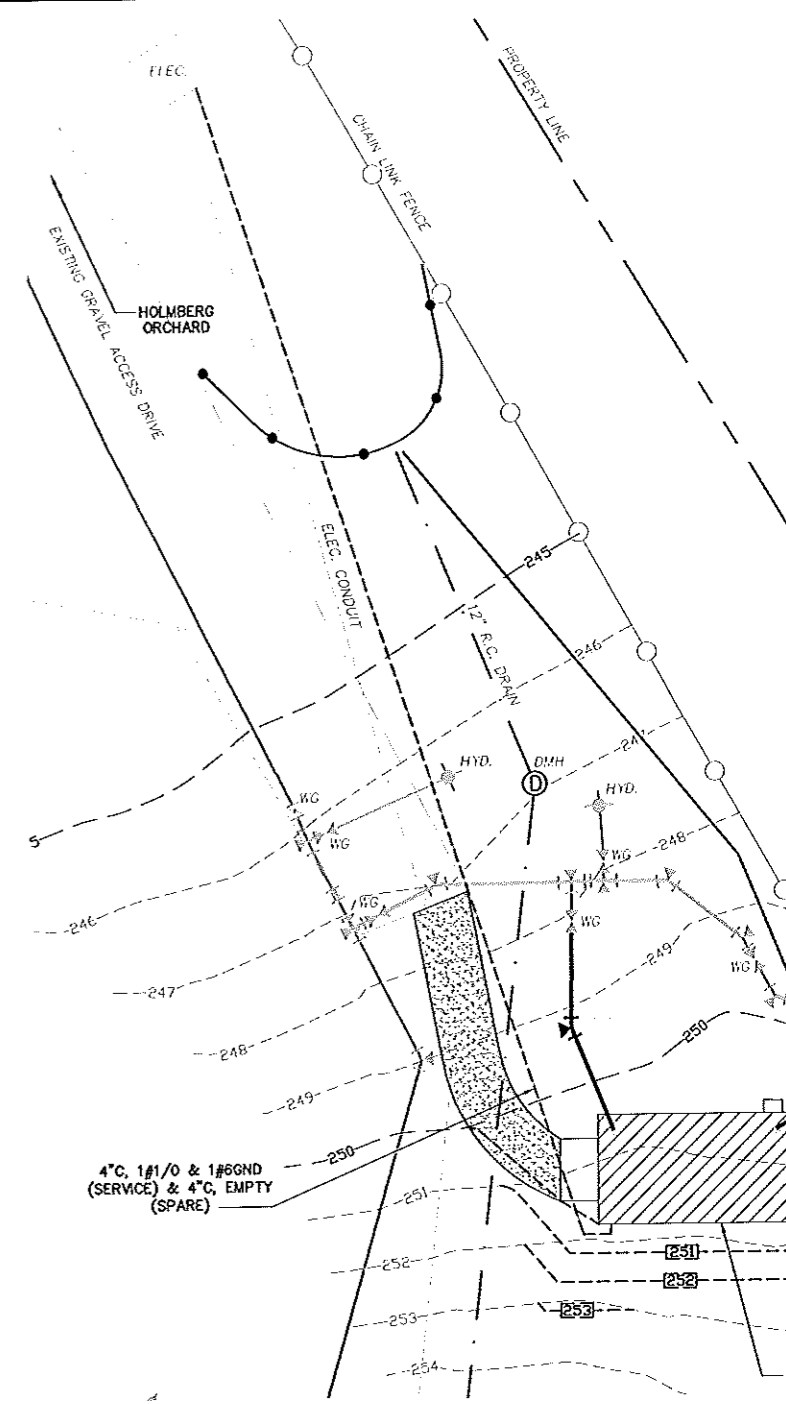


NOTE: ALL EXTERIOR ELECTRICAL WORK SHALL BE IN ACCORDANCE WITH CONNECTICUT LIGHT & POWER REQUIREMENTS

POWER PLAN
SCALE: 3/8" = 1'-0"



EXISTING SITE PLAN
SCALE: 1" = 20'-0"

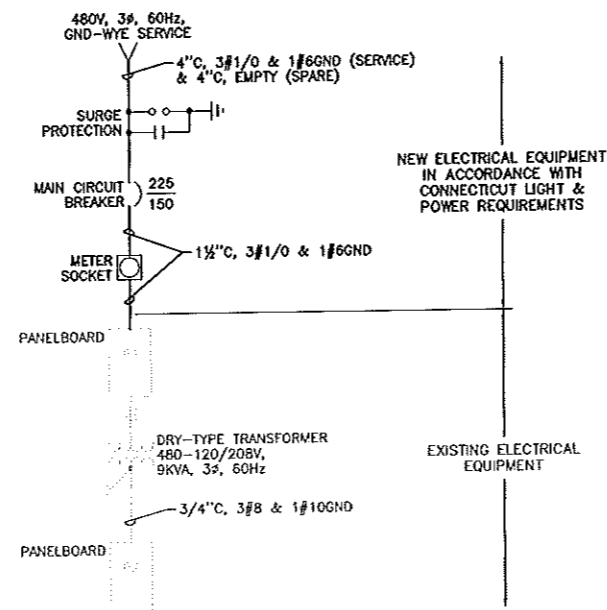


PROPOSED SITE PLAN
SCALE: 1" = 10'-0"

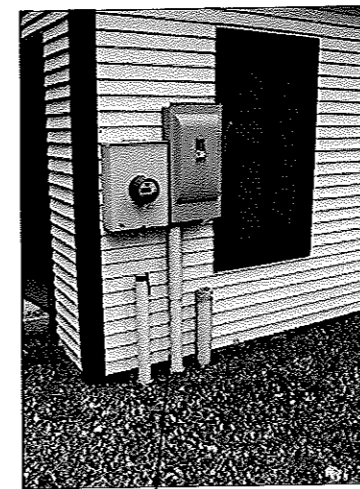
SERVICE PANEL INFORMATION

PANELBOARD P1				
SERVICE: 480V, 3 ϕ , 60Hz		225 AMP MAINS		
MOUNTING: SURFACE		225 AMP MAIN LUGS ONLY		
CKT #	CIRCUIT DESCRIPTION	LOAD KW	HP	BREAKER POLES TRIP
1	PUMP CONTROLLER		47.5	3 100
2	ELECTRIC UNIT HEATER	10		3 20
3	PANELBOARD P2	15		3 15
4	---SPACE---			3 ---

PANELBOARD P2				
SERVICE: 120/208V, 3 ϕ , 4W, 60Hz		100 AMP MAINS		
MOUNTING: SURFACE		40 AMP MAIN CIRCUIT BREAKER		
CKT #	CIRCUIT DESCRIPTION	LOAD KW	HP	BREAKER POLES TRIP
1	LIGHTING	0.4		1 20
2	RECEPTACLES	0.6		1 20
3	EXHAUST FAN		0.25	1 15
4	SPARE			1 20
5	DEHUMIDIFIER	1.2		1 20
6	SPARE			1 20
7	SPARE			1 20
8	SPARE			1 20
9	---SPACE---			1 ---
10	---SPACE---			1 ---
11	---SPACE---			1 ---
12	---SPACE---			1 ---



SINGLE LINE DIAGRAM



DISCONNECT EXISTING ELECTRICAL SERVICES TO CL&P REQUIREMENTS

REVISIONS		
NO.	ITEM	DATE

AMORY ENGINEERS, P.C. DUXBURY, MASSACHUSETTS		
DRAWN BY: PGB/RJT	FILE NAME: AS SHOWN	SCALE: AS SHOWN
DESIGNED BY: PGB/RJT	JOB NO.: 3331	DWG. NO.: 1535
CHECKED BY: RSJ	DATE: 8/15/09	CONTRACT: 2010-**

WATER POLLUTION CONTROL AUTHORITY LEDYARD, CONNECTICUT
RELOCATION OF BOOSTER PUMPING STATION TO SERVE ALJEN HEIGHTS WATER EXTENSION
PLANS, DETAILS AND PHOTO