

State Standard Space Specifications

Projected Enrollment	Grades												
	Pre-K and K	1	2	3	4	5	6	7	8	9	10	11	12
0-350	124	124	124	124	124	156	156	180	180	180	194	194	194
351-750	120	120	120	120	120	152	152	176	176	176	190	190	190
751-1500	116	116	116	116	116	148	148	170	170	170	184	184	184
Over 1500	112	112	112	112	112	142	142	164	164	164	178	178	178

Students/Grade	55	66	61										
Recommended SF/Grade	6,820	8,184	7,564	0	0	0	0	0	0	0	0	0	0

Total Number of Students

182

Number of grades Housed

3

Average Students/Grade

61

Highest Projected 8 yr Enrollment

180

Maximum SF

10,920

Existing GSF

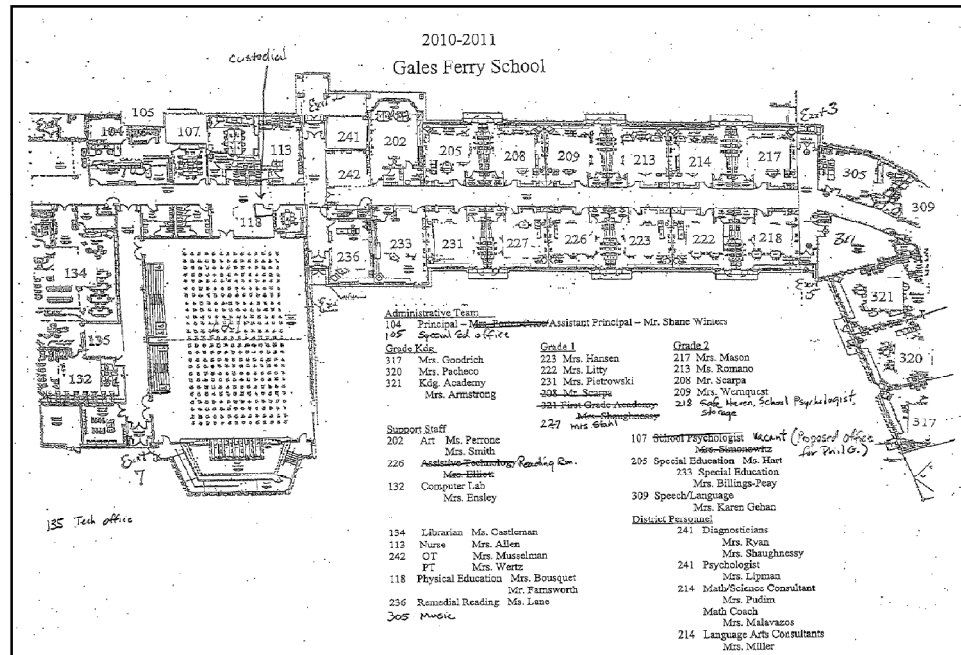
23,000

Total Recommended GSF

22,568

SF Deficit

(no deficit)



State Standard Space Specifications

Projected Enrollment	Grades												
	Pre-K and K	1	2	3	4	5	6	7	8	9	10	11	12
0-350	124	124	124	124	124	156	156	180	180	180	194	194	194
351-750	120	120	120	120	120	152	152	176	176	176	190	190	190
751-1500	116	116	116	116	116	148	148	170	170	170	184	184	184
Over 1500	112	112	112	112	112	142	142	164	164	164	178	178	178

Students/Grade				64	62	65	62						
Recommended SF/Grade	0	0	0	7,936	7,688	10,140	9,672	0	0	0	0	0	0

Total Number of Students

253

Number of grades Housed

4

Average

63

Highest Projected 8 yr Enrollment

252

Maximum SF

15,939

Existing GSF

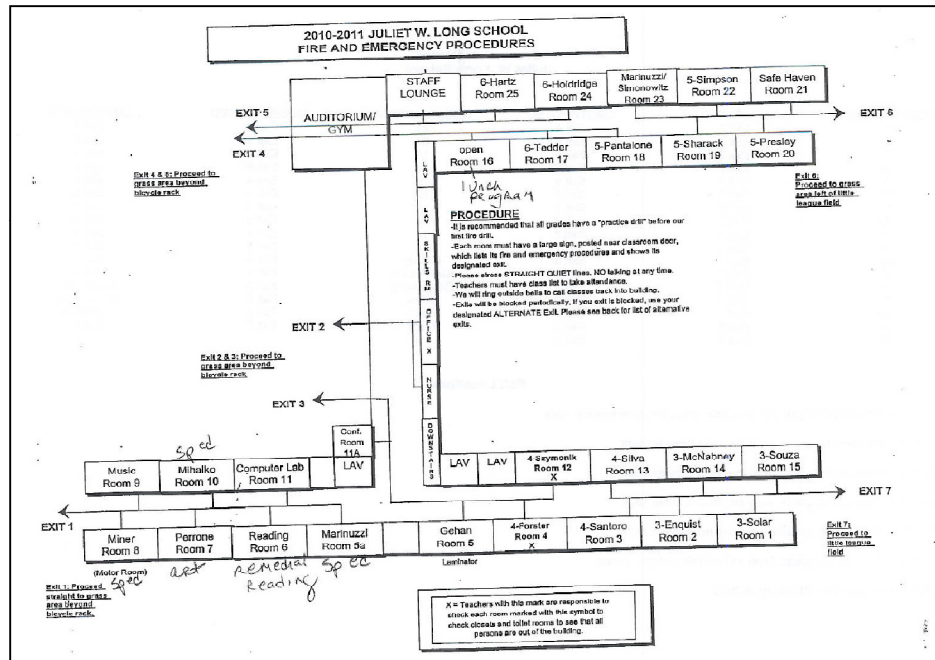
37,600

Total Recommended GSF

35,436

SF Deficit

(no deficit)

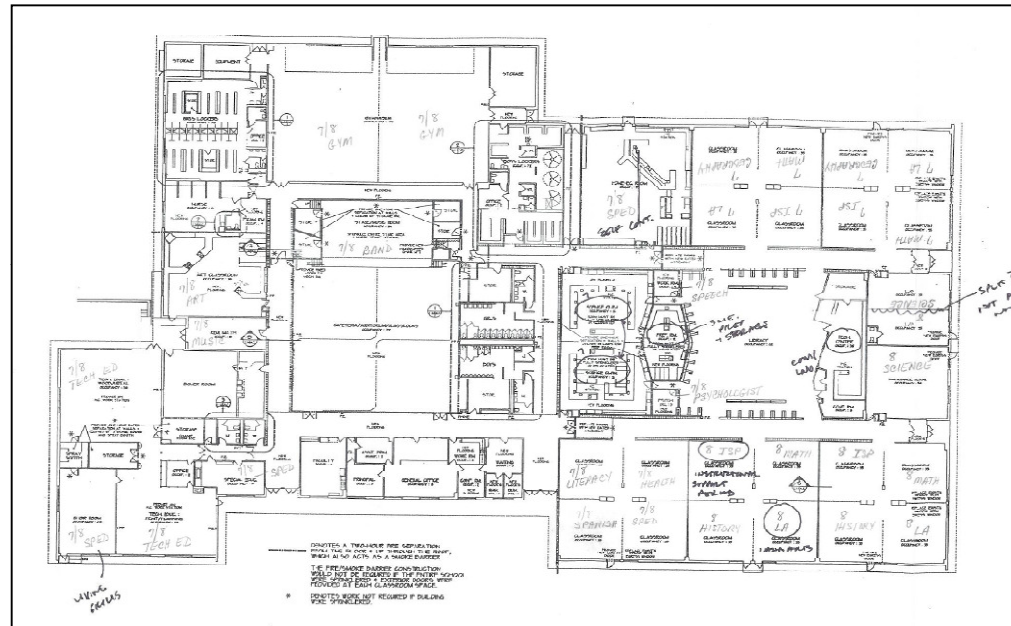


State Standard Space Specifications

Projected Enrollment	Grades												
	Pre-K and K	1	2	3	4	5	6	7	8	9	10	11	12
0-350	124	124	124	124	124	156	156	180	180	180	194	194	194
351-750	120	120	120	120	120	152	152	176	176	176	190	190	190
751-1500	116	116	116	116	116	148	148	170	170	170	184	184	184
Over 1500	112	112	112	112	112	142	142	164	164	164	178	178	178

Students/Grade								177	179				
Recommended SF/Grade	0	0	0	0	0	0	0	31,152	31,504	0	0	0	0

- Total Number of Students**
356
- Number of grades Housed**
2
- Average**
178
- Highest Projected 8 yr Enrollment**
356
- Maximum SF**
63,368
- Existing GSF**
75,600
- Total Recommended GSF**
62,656
- SF Deficit**
(no deficit)



State Standard Space Specifications (Alternate: add 6th Grade to Middle School)

Projected Enrollment	Grades												
	Pre-K and K	1	2	3	4	5	6	7	8	9	10	11	12
0-350	124	124	124	124	124	156	156	180	180	180	194	194	194
351-750	120	120	120	120	120	152	152	176	176	176	190	190	190
751-1500	116	116	116	116	116	148	148	170	170	170	184	184	184
Over 1500	112	112	112	112	112	142	142	164	164	164	178	178	178

Students/Grade							167	177	179				
Recommended SF/Grade	0	0	0	0	0	0	25,384	31,152	31,504	0	0	0	0

Total Number of Students

523

Number of grades Housed

3

Average

174

Highest Projected 8 yr Enrollment

356

Maximum SF

62,063

Existing GSF

75,600

Total Recommended GSF

88,040

SF Deficit

(12,440)

State Standard Space Specifications

Projected Enrollment	Grades												
	Pre-K and K	1	2	3	4	5	6	7	8	9	10	11	12
0-350	124	124	124	124	124	156	156	180	180	180	194	194	194
351-750	120	120	120	120	120	152	152	176	176	176	190	190	190
751-1500	116	116	116	116	116	148	148	170	170	170	184	184	184
Over 1500	112	112	112	112	112	142	142	164	164	164	178	178	178

Students/Grade											169	161	162	152
Recommended SF/Grade	0	0	0	0	0	0	0	0	0	0	28,730	29,624	29,808	27,968

Total Number of Students

644

Number of grades Housed

4

Average

161

Highest Projected 8 yr Enrollment

794

Maximum SF

127,834

Existing GSF

191,000

Total Recommended GSF

116,130

SF Deficit

(no deficit)

